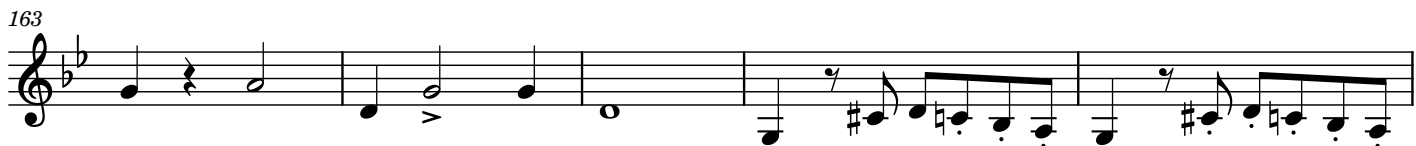
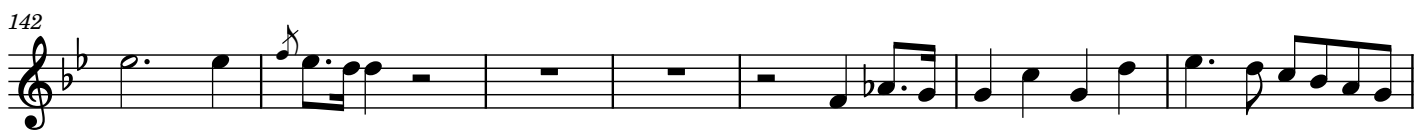
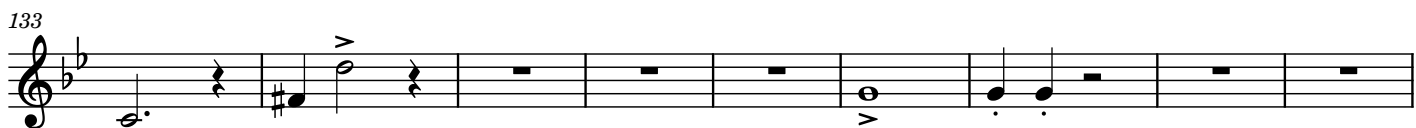


ALLEGRO CON FUOCO.

[Chopin, Fryderyk]

Musical score for 'Allegro con Fuoco' by Chopin, Fryderyk. The score is written in treble clef, 3/4 time, and B-flat major. It consists of ten staves of music, numbered 1 through 50. The notation includes various rhythmic values, accidentals, and performance markings such as accents and trills.

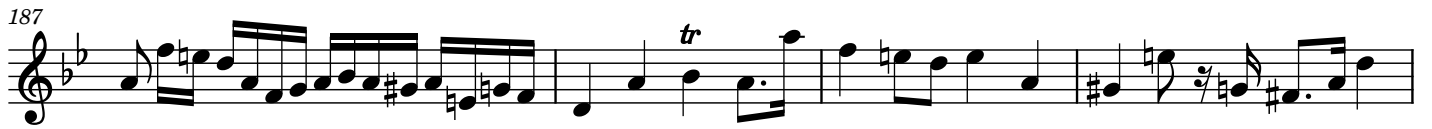
Measures 1-7: Introduction with a half rest, followed by a quarter note G4, a quarter note A4, and a quarter note Bb4. Measure 8 begins with a quarter note G4, followed by eighth notes A4, Bb4, and A4. Measure 9 has a quarter note Bb4, a quarter note A4, and a quarter note G4. Measure 10 has a quarter note F4, a quarter note E4, and a quarter note D4. Measure 11 has a quarter note C4, a quarter note B3, and a quarter note A3. Measure 12 has a quarter note G3, a quarter note F3, and a quarter note E3. Measure 13 has a quarter note D3, a quarter note C3, and a quarter note B2. Measure 14 has a quarter note A2, a quarter note G2, and a quarter note F2. Measure 15 has a quarter note E2, a quarter note D2, and a quarter note C2. Measure 16 has a quarter note B1, a quarter note A1, and a quarter note G1. Measure 17 has a quarter note F1, a quarter note E1, and a quarter note D1. Measure 18 has a quarter note C1, a quarter note B0, and a quarter note A0. Measure 19 has a quarter note G0, a quarter note F0, and a quarter note E0. Measure 20 has a quarter note D0, a quarter note C0, and a quarter note B0. Measure 21 has a quarter note A0, a quarter note G0, and a quarter note F0. Measure 22 has a quarter note E0, a quarter note D0, and a quarter note C0. Measure 23 has a quarter note B0, a quarter note A0, and a quarter note G0. Measure 24 has a quarter note F0, a quarter note E0, and a quarter note D0. Measure 25 has a quarter note C0, a quarter note B0, and a quarter note A0. Measure 26 has a quarter note G0, a quarter note F0, and a quarter note E0. Measure 27 has a quarter note D0, a quarter note C0, and a quarter note B0. Measure 28 has a quarter note A0, a quarter note G0, and a quarter note F0. Measure 29 has a quarter note E0, a quarter note D0, and a quarter note C0. Measure 30 has a quarter note B0, a quarter note A0, and a quarter note G0. Measure 31 has a quarter note F0, a quarter note E0, and a quarter note D0. Measure 32 has a quarter note C0, a quarter note B0, and a quarter note A0. Measure 33 has a quarter note G0, a quarter note F0, and a quarter note E0. Measure 34 has a quarter note D0, a quarter note C0, and a quarter note B0. Measure 35 has a quarter note A0, a quarter note G0, and a quarter note F0. Measure 36 has a quarter note E0, a quarter note D0, and a quarter note C0. Measure 37 has a quarter note B0, a quarter note A0, and a quarter note G0. Measure 38 has a quarter note F0, a quarter note E0, and a quarter note D0. Measure 39 has a quarter note C0, a quarter note B0, and a quarter note A0. Measure 40 has a quarter note G0, a quarter note F0, and a quarter note E0. Measure 41 has a quarter note D0, a quarter note C0, and a quarter note B0. Measure 42 has a quarter note A0, a quarter note G0, and a quarter note F0. Measure 43 has a quarter note E0, a quarter note D0, and a quarter note C0. Measure 44 has a quarter note B0, a quarter note A0, and a quarter note G0. Measure 45 has a quarter note F0, a quarter note E0, and a quarter note D0. Measure 46 has a quarter note C0, a quarter note B0, and a quarter note A0. Measure 47 has a quarter note G0, a quarter note F0, and a quarter note E0. Measure 48 has a quarter note D0, a quarter note C0, and a quarter note B0. Measure 49 has a quarter note A0, a quarter note G0, and a quarter note F0. Measure 50 has a quarter note E0, a quarter note D0, and a quarter note C0.



184



187



191



196



202



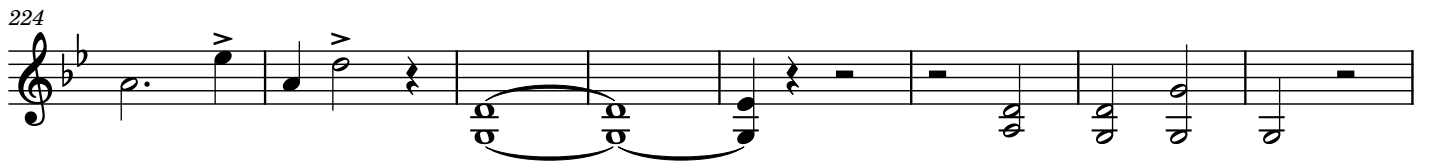
209



216



224



232



239



243

Musical notation for exercise 243, featuring a treble clef, a key signature of one flat, and a series of notes and rests across ten measures. The notation includes a treble clef, a key signature of one flat, and a series of notes and rests across ten measures. The notes are: G4, A4, Bb4, C5, Bb4, A4, G4, F4, E4, D4. The rests are: a whole rest in the second measure, and a whole rest in the tenth measure. The piece concludes with a double bar line.